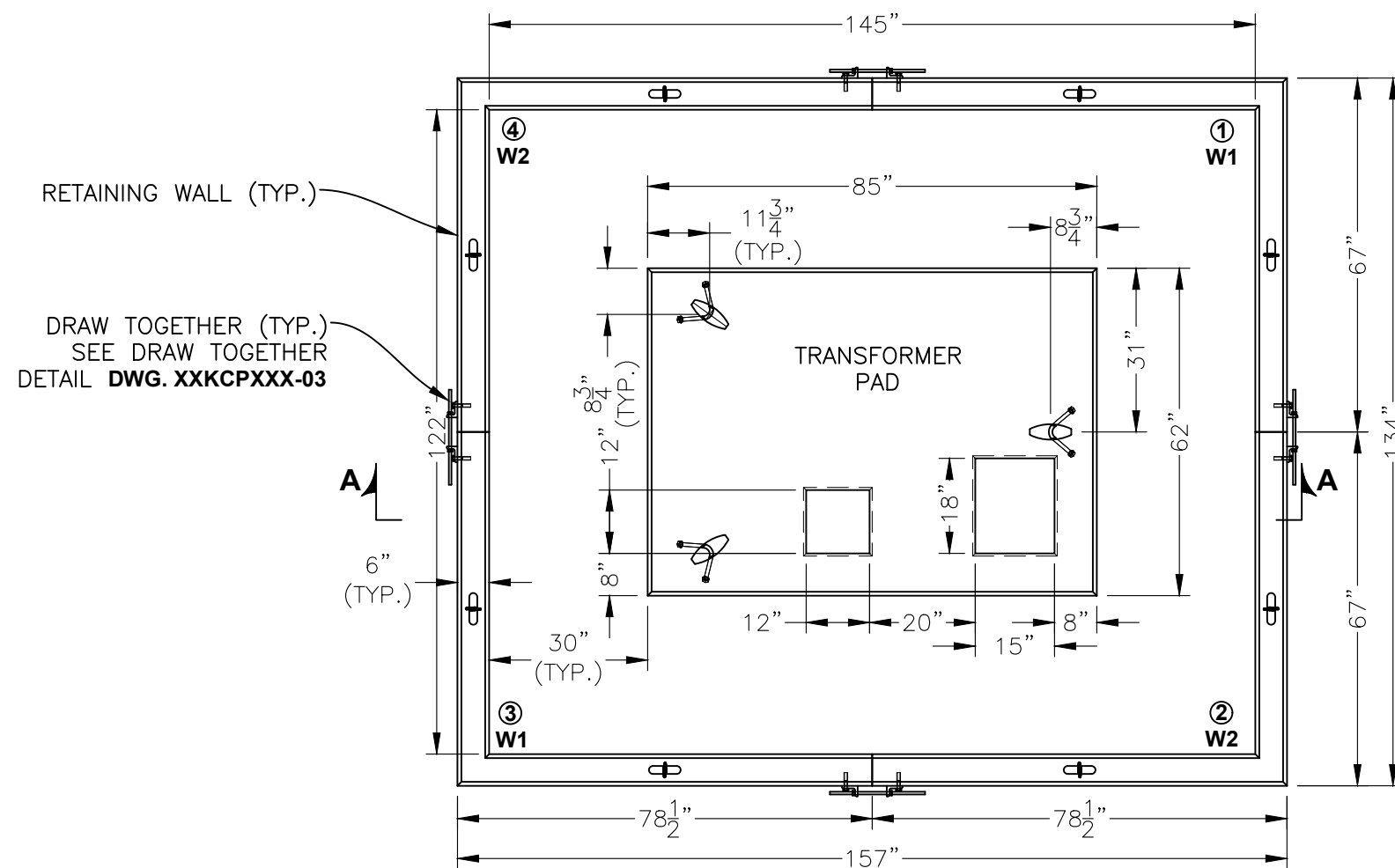
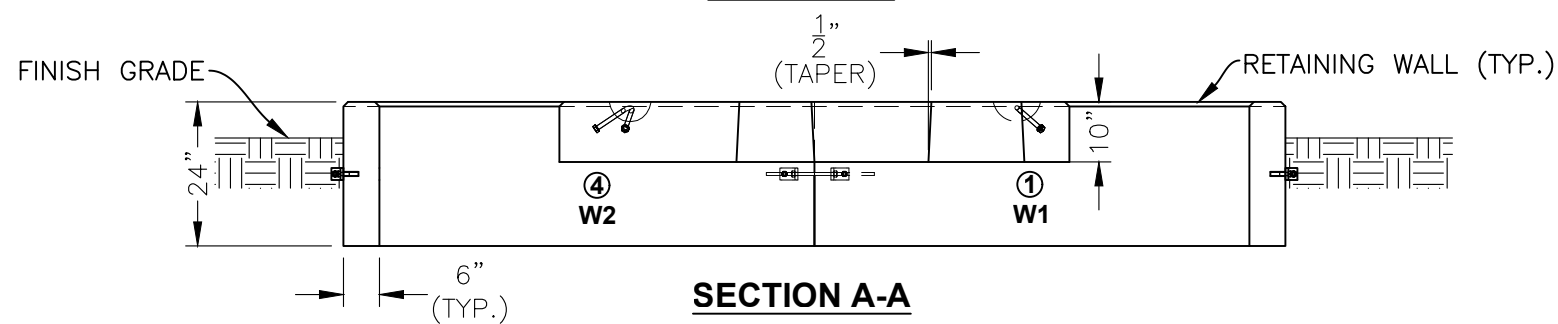


NATIONAL GRID TRANSFORMER PAD & CURB - TYPE '8C'



PLAN VIEW



SECTION A-A

SPECIFICATIONS

CONCRETE: 5,000 PSI @ 28 DAYS
 ENTRAINED AIR: 6% ±1%
 STEEL: #5-ASTM A496-A615 GRADE 60-60 KSI
 2" COVER MINIMUM
 CHAMFER: 3/4" TOP EDGES OF ALL PIECES
 WEIGHT: PAD 4,120 LBS.
 CURB SECTION 1,712 LBS

KCP PRODUCT CODES:
 CURB ONLY - TP-NGUF8C-C
 PAD ONLY - TP-NGUF8C-P
 CURB & PAD - TP-NGUF8C-P & C

<input type="checkbox"/> Approved <input type="checkbox"/> Approved As Noted		REV. NO. DATE DESCRIPTION	
		PREPARED FOR:	
ACCT#:		DATE: 12/29/22 SHEET TITLE: NATIONAL GRID TRANSFORMER PAD & CURB - TYPE '8C' DRAWN BY: MAK, CK'D BY: MJK	
SCALE: N.T.S.		PROJECT: 25 & 35kV, 75-300 KVAPRECAST CONCRETE FOUNDATION FOR 3 PHASE PAD MOUNTED TRANSFORMER MS 2584 STD ITEM: UF8C ITEM ID: 9200898	
CONTRACT DWG NO:		SHT NO: 03	
PROJECT NO:		KISTNER DWG NO:	
By: _____		DATE: _____	
		KISTNER CONCRETE PRODUCTS, INC. 5550 HINMAN ROAD LOCKPORT, NEW YORK 14094 PHONE 716-434-6157 PROPRIETARY INFORMATION ALL RIGHTS OF KISTNER CONCRETE PRODUCTS, INC.	