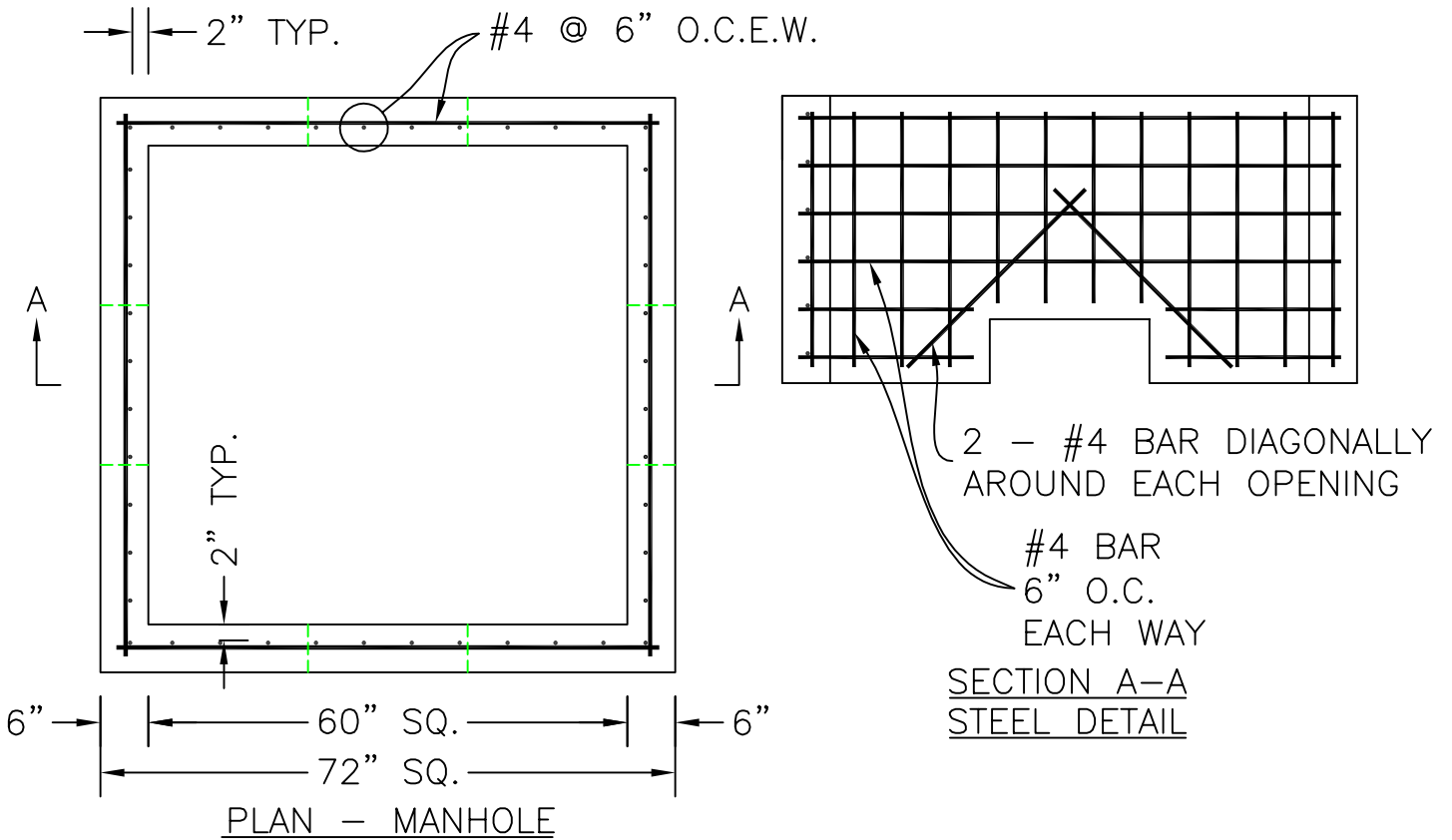
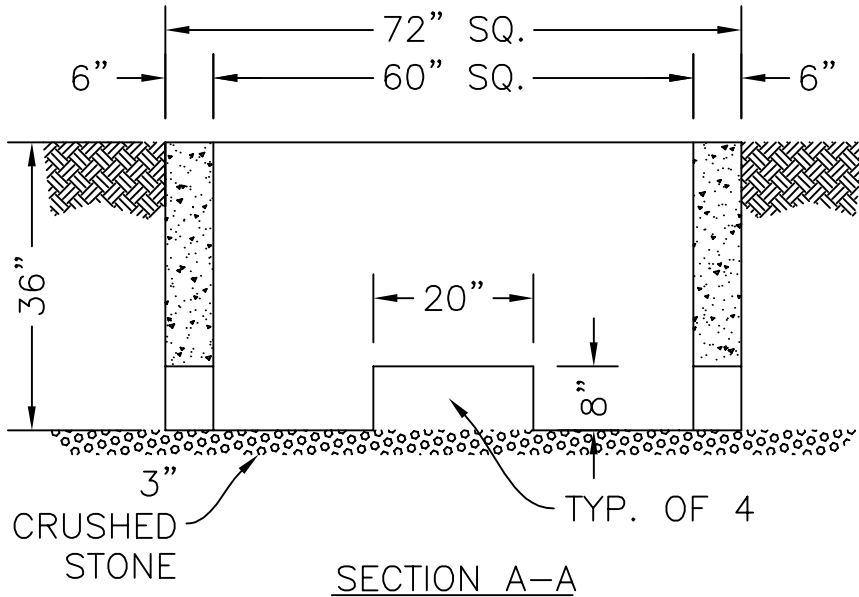




# RG&E/NYSE&G TRANSFORMER VAULT

SPECIFICATIONS:  
 CONCRETE: 4,000 P.S.I. @ 28 DAYS.  
 ENTRAINED AIR: 5% - 9%.  
 STEEL: #4 @ 12" O.C.E.W.  
 A.S.T.M. A496-A615  
 GRADE 60-60 KSI.  
 DESIGN LOADING: A-0.3/300PSF/WALKWAYS.  
 FLOTATION FORCES NOT ACCOUNTED FOR.



NOTES:  
 PAD COVERS ARE 6" THICK. SIZE AS REQUIRED. SEE ATTACHED DETAIL