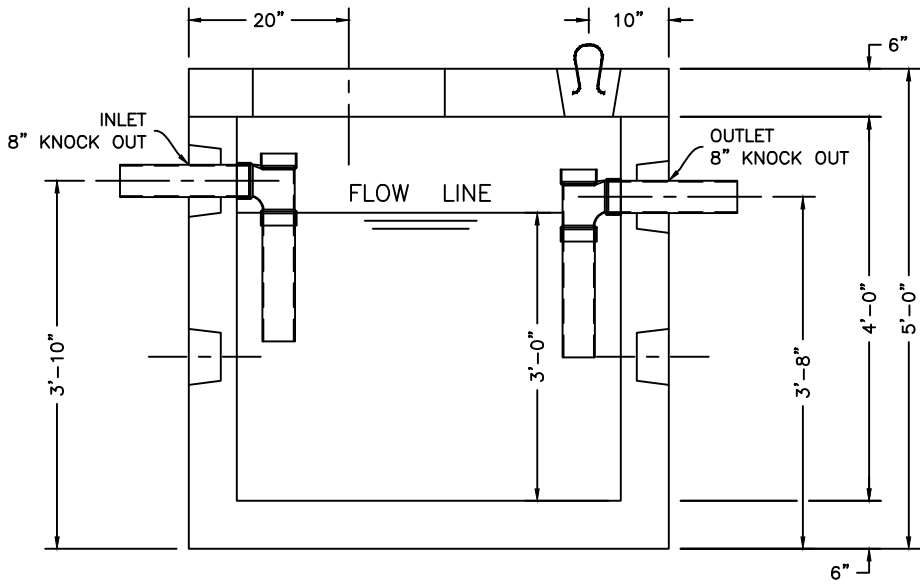
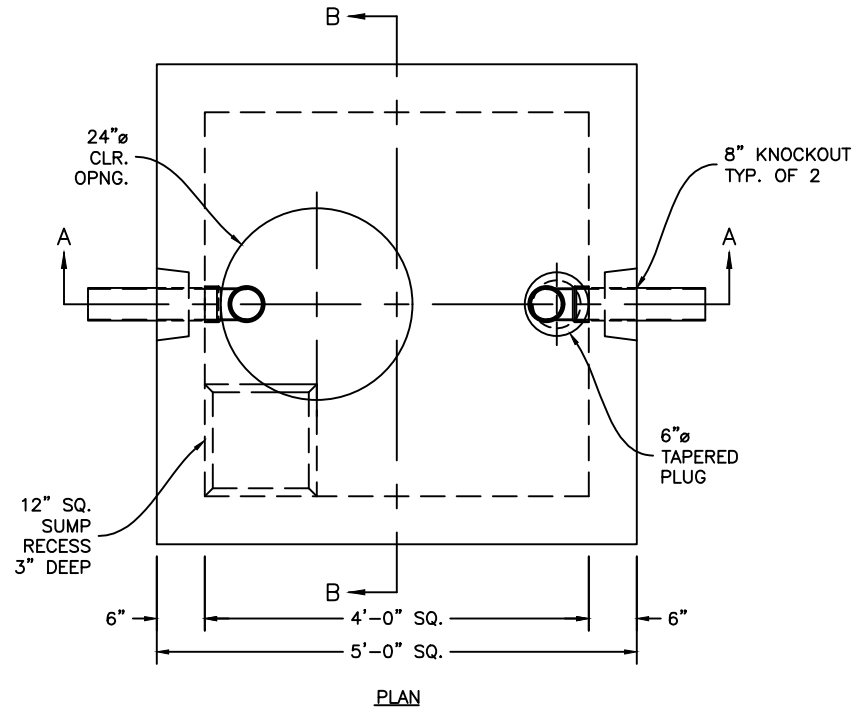




KISTNER CONCRETE PRODUCTS, INC.
 8713 READ ROAD
 E. PEMBROKE, N.Y.
 14056
 (716) 894-2267

PRODUCT DESIGNATION
350 GALLON SEPTIC TANK/TRAFFIC

DWG. NO.
ST-ST350T
 12-20-22



SP-7A
 SPECIFICATIONS:
 CONCRETE: 5,000 P.S.I. @ 28 DAYS.
 ENTRAINED AIR: 5% - 8%.
 STEEL: A.S.T.M. A496-A615
 GRADE 60-80 KSI.
 DESIGN LOADING: ACI 318-99 TRAFFIC. USE ACI LOAD FACTORS.
 A.A.S.H.T.O. METHOD OF DESIGN. EQUIVALENT SOIL PRESSURE OF 40 (PCF).
 FLOATATION: FLOATATION FORCES NOT ACCOUNTED FOR.
 LIVE LOAD: H20.
 EARTH FILL: 0 TO 6'.
 WATER TABLE: 3' BELOW GRADE.

WEIGHT:
 TOP SECTION: 1,852 LBS.
 BOTTOM SECTION: 7,186 LBS.
 TOTAL: 9,038 LBS.

BAFFLE: 4" BY KISTNER. LARGER BY CONTRACTOR.

WATERTIGHT ASSEMBLY IS THE RESPONSIBILITY OF THE INSTALLING CONTRACTOR. ASK FOR KISTNER "WATERTIGHT JOINT INSTALLATION" DETAIL.

PIPE OPENINGS STOCK:

- PIPE SEALS REQUIRED
- 4" PVC - OPENING STOCK - SEAL TO BE INSTALLED
- GROUTED OPENINGS ONLY - REQUIRED
- 4" PVC - STOCK KNOCKOUT TO BE BROKEN OUT BY CONTRACTOR
- 6" PVC - STOCK KNOCKOUT TO BE BROKEN OUT BY CONTRACTOR

FOR RISER, FRAME, AND COVER: SEE "TRAFFIC TANK EXTENSIONS"

