



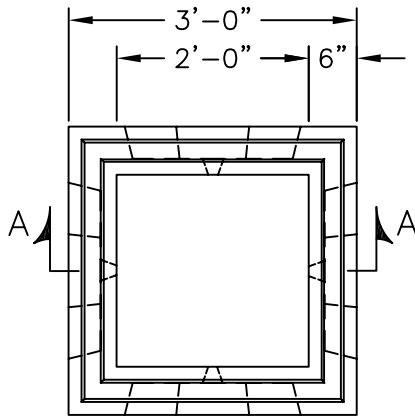
KISTNER CONCRETE PRODUCTS INC.
8713 READ ROAD
E. PEMBROKE, N.Y.
14056
(716) 894-2267

PRODUCT DESIGNATION

24" SQ. X 54" CATCH BASIN

DWG. NO.

CB-CB2454 ©
4/6/07



PLAN

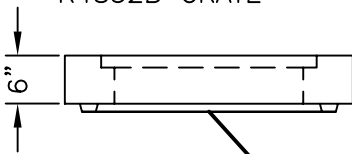
SPECIFICATIONS:

CONCRETE: 4,000 PSI @ 28 DAYS
 ENTRAINED AIR: 5%-9%
 STEEL: ASTM A496-A615 GRADE 60-60 KSI
 DESIGN LOADING: AASHTO HS-20-44 WITH 30% IMPACT AND EQUIVALENT SOIL PRESSURE OF 30 PCF. FLOATATION FORCES NOT ACCOUNTED FOR.
 WEIGHT: 2,851 LBS.
 KNOCKOUT: 20"W x 42"H ALL KNOCKOUTS HAVE 2"-2 1/2" CONCRETE THICKNESS.

DRAIN HOLE: ALL UNITS HAVE 1" DRAIN HOLES IN EACH KNOCKOUT. CONTRACTOR TO GROUT IF NOT REQUIRED.

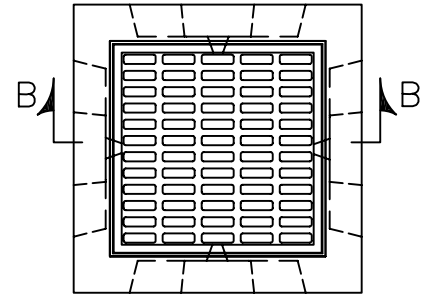
RAISED FRAME & GRATE

- CONTRACTOR TO SUPPLY
- 2" HIGH STEEL FRAME FOR R4832B GRATE
- 4" HIGH CAST IRON FRAME FOR R4832B GRATE
- 6" CAP WITH FRAME CAST IN FLUSH FOR R4832B GRATE

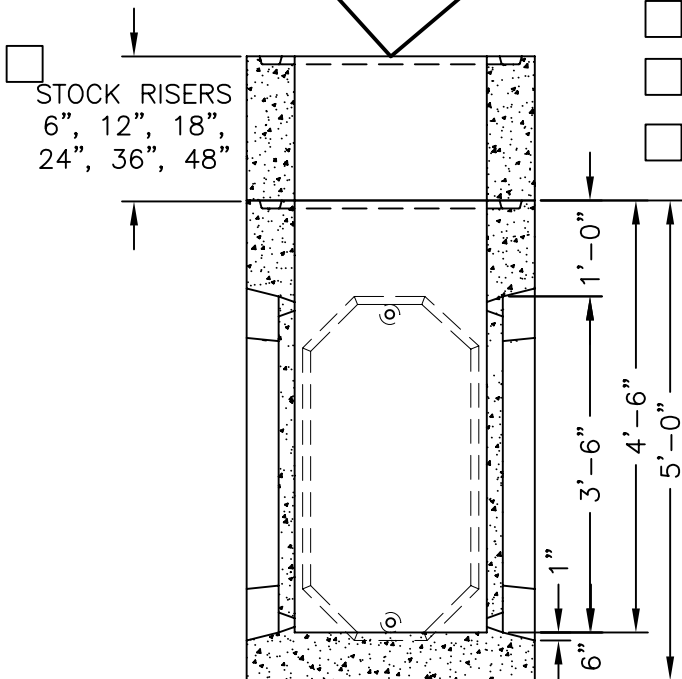


BITUMASTIC COATING (IF REQUIRED)

- INTERIOR
- EXTERIOR
- NONE REQ'D

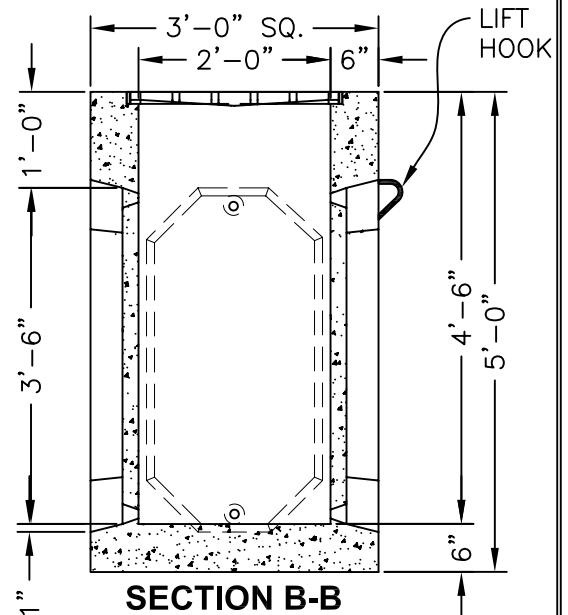


PLAN



SECTION A-A

- CODE: 315B** FRAME AND GRATE IN CAP OR RAISED STYLE TO BE USED.



SECTION B-B

- CODE: 316B** WITH NEENAH R4832B GRATE OR EQUAL - HS-20-44 LOADING BICYCLE PROOF CAST IN FLUSH