



KISTNER CONCRETE PRODUCTS INC.
8713 READ ROAD
E. PEMBROKE, N.Y.
14056
(716) 894-2267

PRODUCT DESIGNATION

12'-0" X 12'-0" STANDARD SQUARE STRUCTURE

DWG. NO.

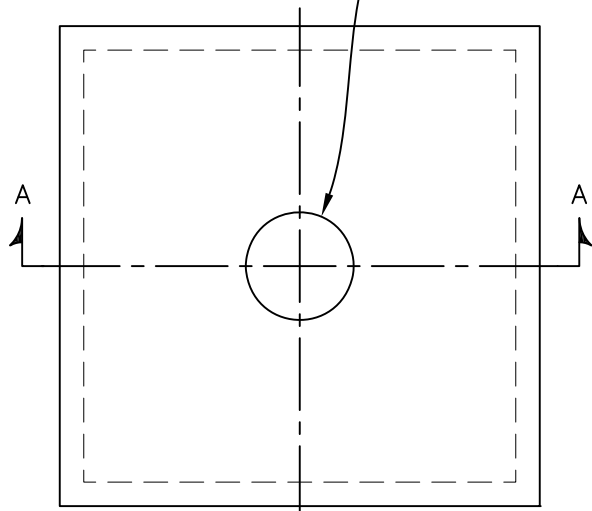
SRS-SRS12SQ ©

9/24/12

SPECIFICATIONS:

CONCRETE: 4,000 P.S.I. @ 28 DAYS
 ENTRAINED AIR: 5% - 9%
 STEEL: A.S.T.M. A496-A615
 GRADE 60-60 KSI.
 DESIGN LOADING: A.A.S.H.T.O. HS-20-44
 WITH 30% IMPACT AND EQUIVALENT SOIL PRESSURE OF 130 (PSF). FLOTATION FORCES NOT ACCOUNTED FOR.

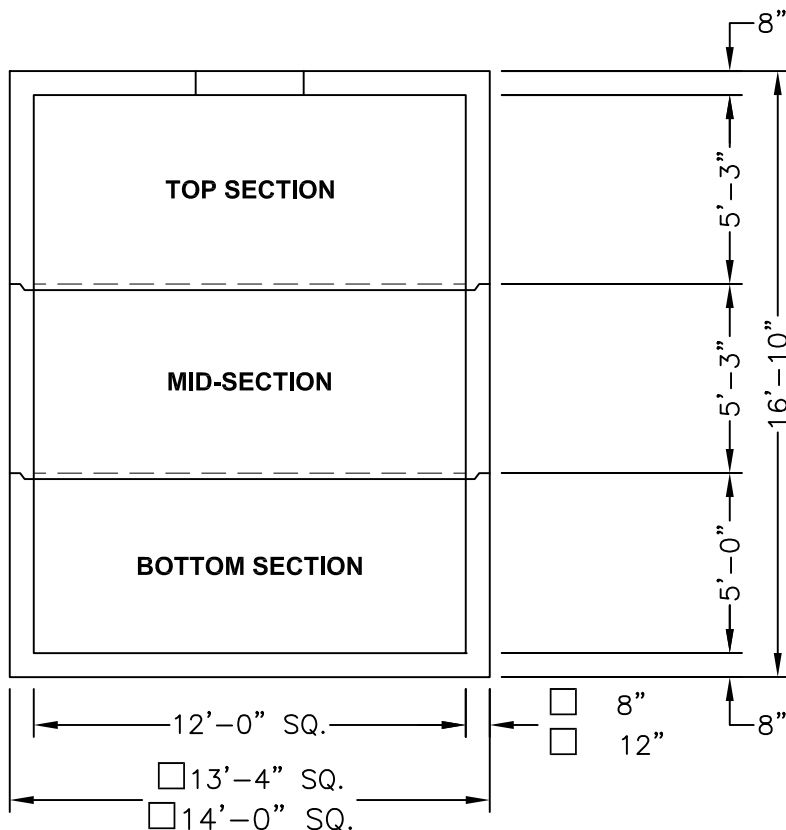
SIZE AND LOCATION AS REQUIRED



PLAN

WEIGHT:

8" WALLS:	TOP SECTION:	47,863 LBS.
	MID-SECTION:	28,841 LBS.
	BOTTOM SECTION:	46,361 LBS.
	TOTAL:	123,065 LBS.
12" WALLS:	TOP SECTION:	65,665 LBS.
	MID-SECTION:	44,430 LBS.
	BOTTOM SECTION:	62,956 LBS.
	TOTAL:	173,051 LBS.



SECTION A-A