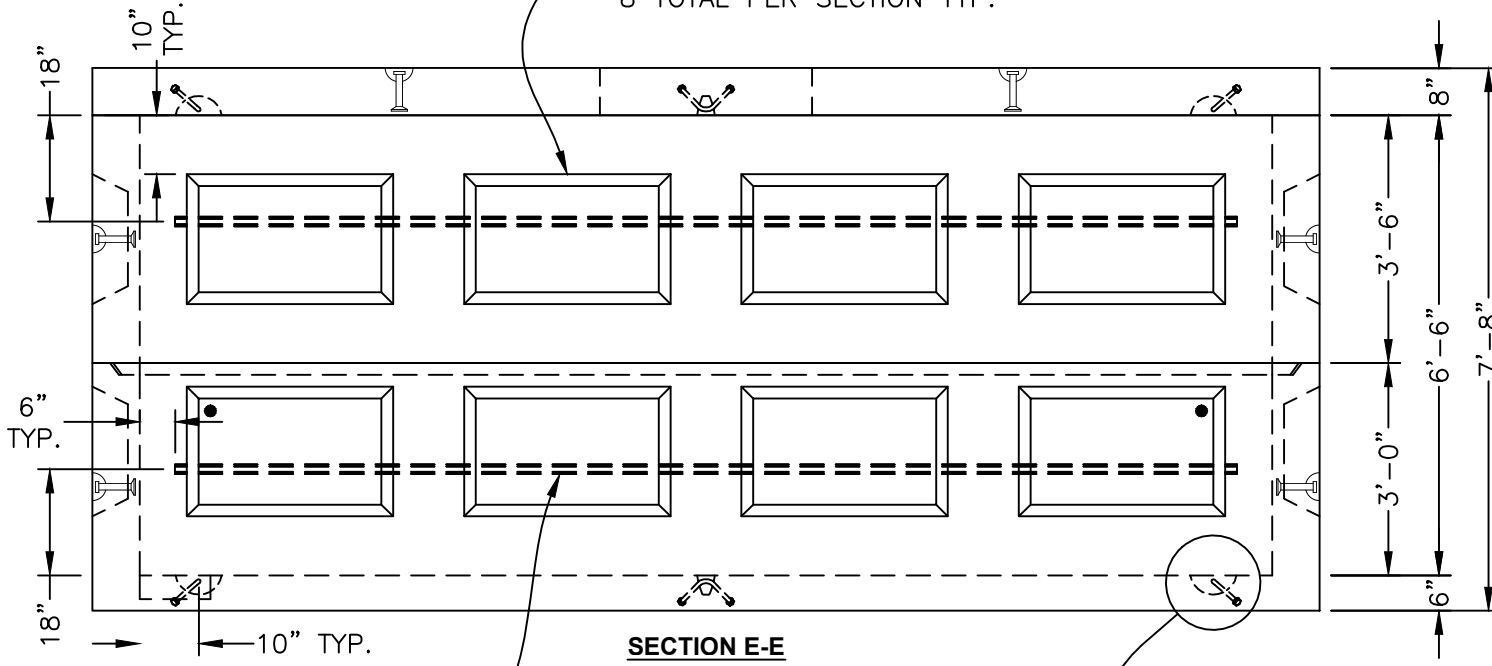


TABLE OF UNITS - ELECTRICAL MANHOLE			
MARK	QTY	VOL (yd ³)	WT (lbs.)
BOTTOM SECTION	1	5.673	22,525
RISER	1	3.518	14,060
TOP SLAB	1	2.964	11,880

APX PIECE WT.: CONCRETE + 10% FACTOR OF SAFETY. WEIGHTS ARE APPROXIMATE.

GROUND WIRE SEE DETAIL "Y" AS CLOSE TO JOINT AS POSSIBLE TYP. OF 2

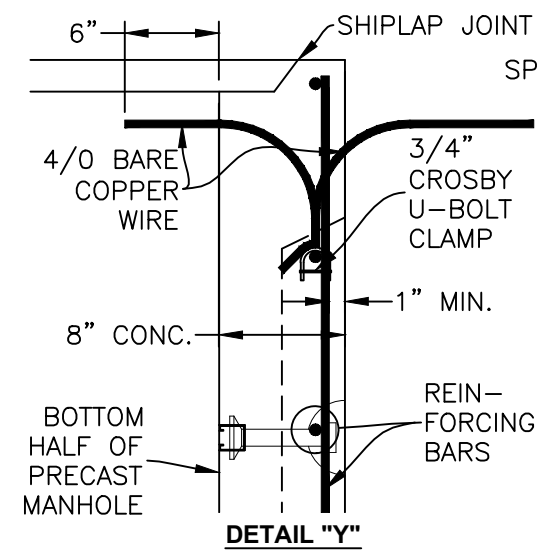
18" X 31" KO 4" DEEP WITH 2" DRAFT 8 TOTAL PER SECTION TYP.



SECTION E-E

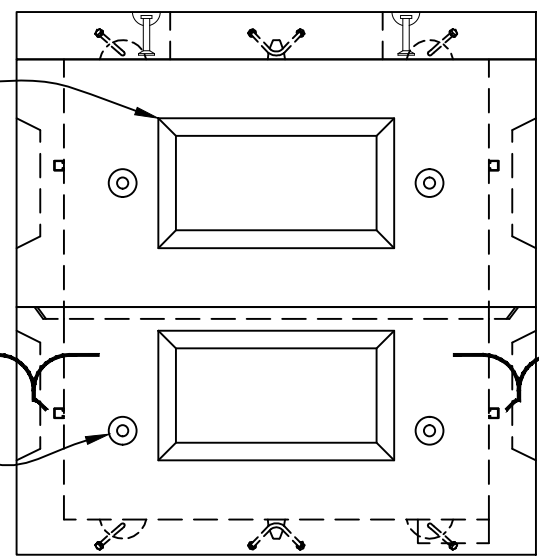
UNISTRUT- 1 5/8" x 1 3/8" GALV. CONCRETE INSERT x 15' LONG - 6" IN FROM EA. END

PULLING IRON - TYP. OF 8

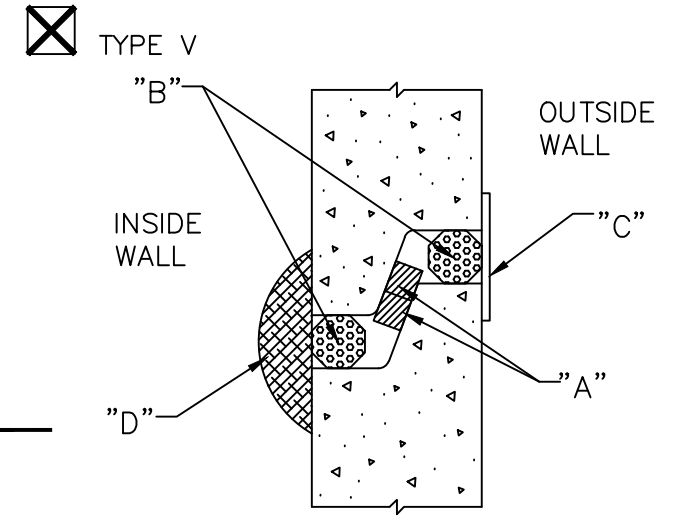


DETAIL "Y"

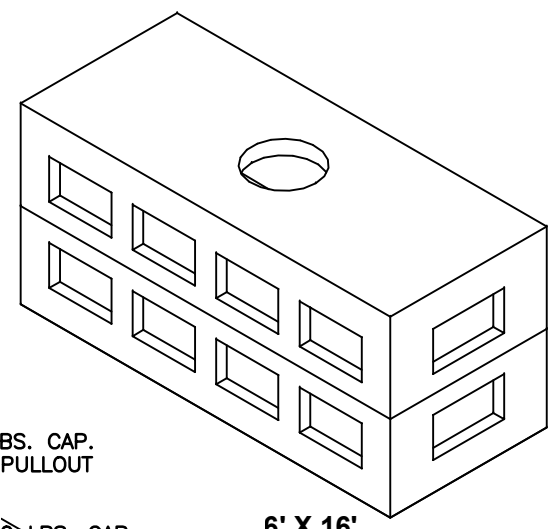
SPECIFICATIONS:
 CONCRETE: 6,500 P.S.I. @ 28 DAYS.
 ENTRAINED AIR: 5% - 9%.
 STEEL: A.S.T.M. A496-A615 GRADE 60-60 KSI.
 DESIGN LOADING: A.A.S.H.T.O. HS-25-44 WITH 30% IMPACT AND EQUIVALENT SOIL PRESSURE OF 130 (PCF). FLOTATION FORCES NOT ACCOUNTED FOR.
 COVER: 0 - 2'.
 WATER TABLE: 3' BELOW GRADE.



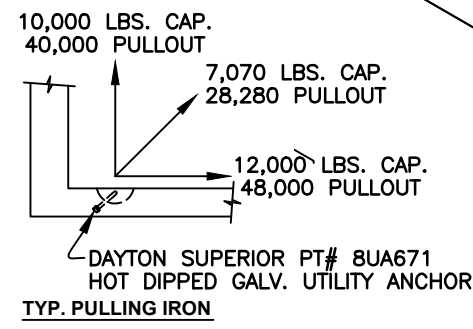
SECTION F-F



TYPICAL SECTION - REVERSE LIP



6' X 16' 2 SECTIONS HIGH



TYP. PULLING IRON

ELECTRICAL MH

REV. NO.	DATE	DESCRIPTION

PREPARED FOR: XXXX ACCT # XXXXX

JOB ID: XXXXX

DATE: 1/2/14 SHEET TITLE: 6'x16' ELECTRIC MH DETAILS AND ISO DRAWN BY: MAK CK'D BY: MJK
 SCALE: N.T.S.
 PROJECT: XXXX XXXX

KISTNER DWG NO: 13KCP0XX-0 CONTRACT DWG NO: XXXX
 KISTNER SHT NO: 4A - PUBLIC NYS DOT DWG NO: XXXXX

KISTNER CONCRETE PRODUCTS, INC.
 5550 HINMAN ROAD
 LOCKPORT, NEW YORK 14094
 PHONE 716-434-6157
 PROPRIETARY INFORMATION
 ALL RIGHTS OF KISTNER CONCRETE PRODUCTS, INC.