

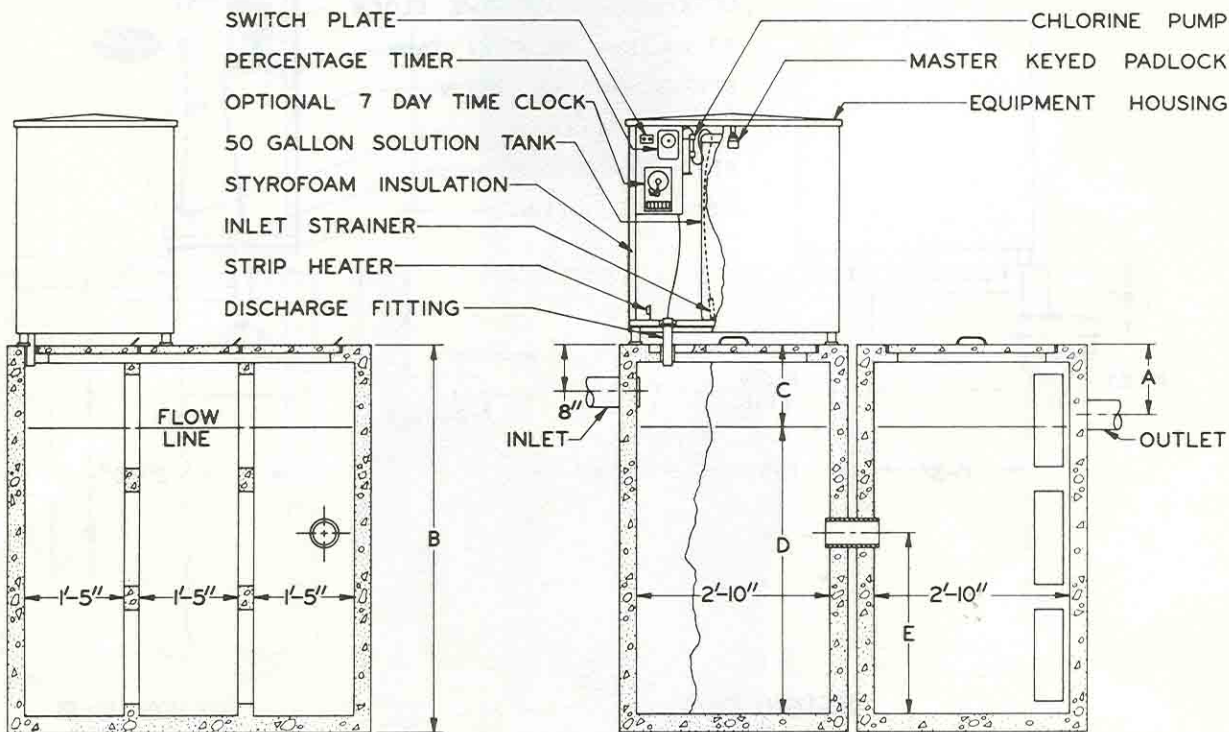
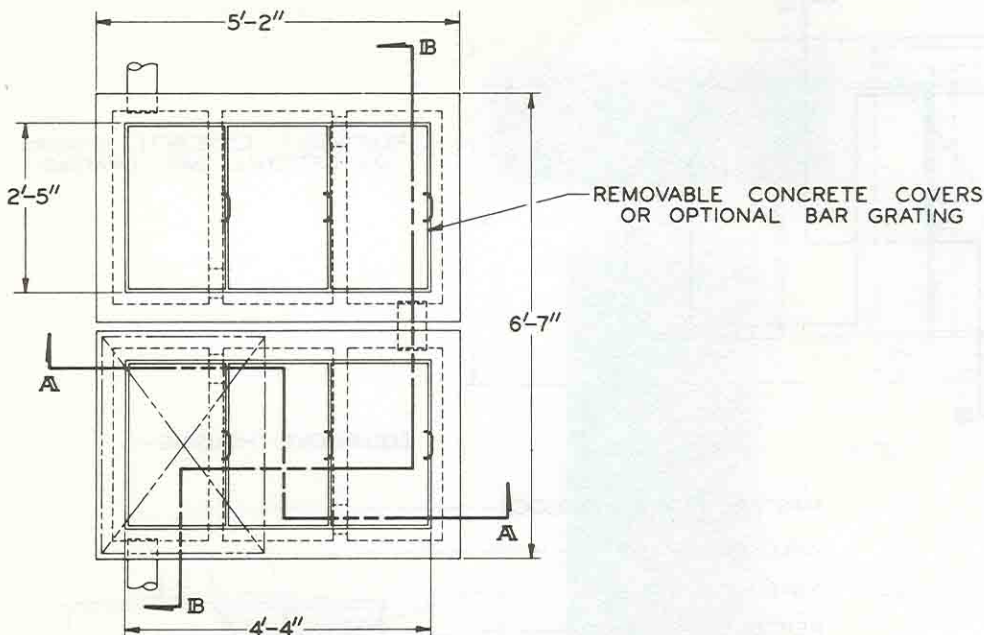


KISTNER CONCRETE PRODUCTS, INC. ©

SUPERIOR PRECAST PRODUCTS THROUGH ENGINEERING

MAIN SALES OFFICE: P.O. BOX 250, 8713 READ ROAD, EAST PEMBROKE, NEW YORK 14056
 716/894-2267 BUFFALO LINE 716/762-8216 EAST PEMBROKE LINE

HYPOCHLORINATOR TYPE II



SECTION A-A

SECTION B-B

PLANT SIZE	A	B	C	D	E	GAL.
27,500 - 35,000	1'-0"	5'-6"	1'-2.5"	4'-5"	2'-7"	738
37,500 - 50,000	1'-0"	7'-2"	1'-2.5"	5'-8.5"	4'-3"	1043