



THERMAL-KRETE™
USA
 1-800-809-2801

PRODUCT DESIGNATION

THERMAL-KRETE™
 INSULATION OPTIONS

DWG. NO.

KP-TKINSOPT ©
 11-11-97

OPTION I

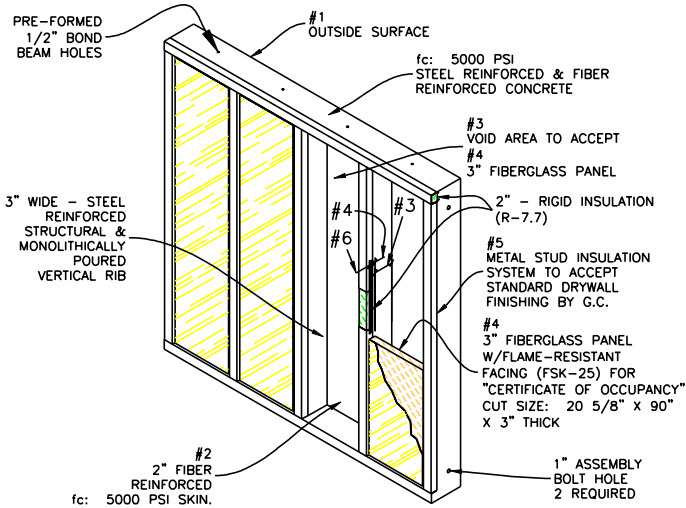
INSULATION OPTION IV

R/U VALUE ANALYSIS

1	OUTSIDE SURFACE	0.17
2	2" PRECAST CONCRETE	0.15
3	NON-REFLECTIVE AIR SPACE - 5" (50 DEGREE F. MEAN, 10 DEGREE F. TEMP DIFF.)	3.00
4	3" FIBERGLASS PANEL - FLAME RESISTANT FACING (FSK-25)	13.00
5	METAL STUD	0.00
6	1/2" NON-REFLECTIVE AIR SPACE*	0.52
7	INSIDE AIR (STILL AIR)	0.68
*INTERPOLATED TOTAL THERMAL RESISTANCE		17.52

PER ASHRAE HANDBOOK

$U = 1/R = 0.057$



PATENT PENDING

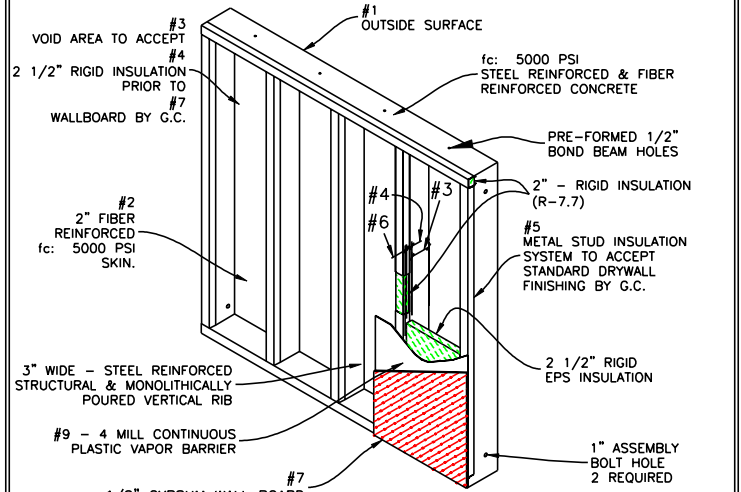
OPTION II

R/U VALUE ANALYSIS

1	OUTSIDE SURFACE	0.17
2	2" PRECAST CONCRETE	0.15
3	NON-REFLECTIVE AIR SPACE - 6" (50 DEGREE F. MEAN, 10 DEGREE F. TEMP DIFF.)	0.68
4	2 1/2" EPS	9.63
5	METAL STUD	0.00
6	1/2" NON-REFLECTIVE AIR SPACE*	0.92
7	1/2" GYPSUM BOARD	0.45
8	INSIDE AIR (STILL AIR)	0.68
9	4 MILL CONTINUOUS PLASTIC VAPOR BARRIER	0.00
*INTERPOLATED TOTAL THERMAL RESISTANCE		12.68

PER ASHRAE HANDBOOK

$U = 1/R = 0.079$



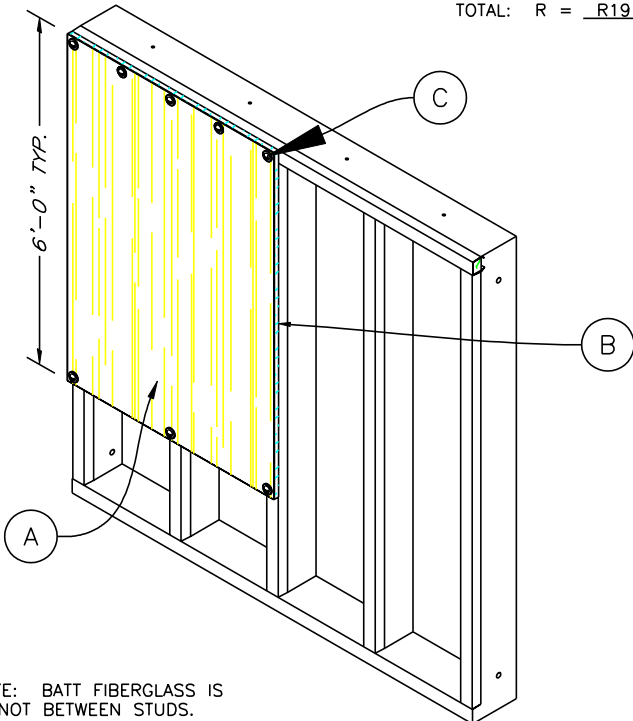
PATENT PENDING

OPTION III

WMP-30 "INSULATION METHOD"
 POLYPROPYLENE/SCRIM/KRAFT

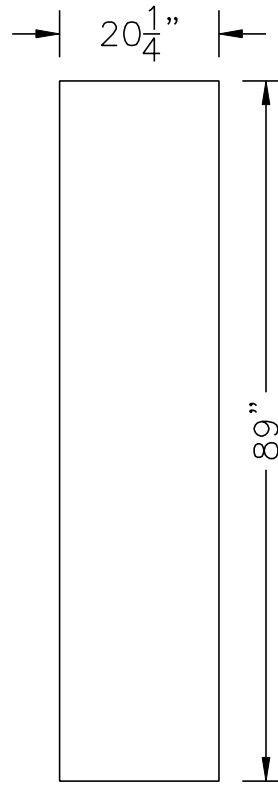
A	WHITE METALLIZED PROPYLENE
B	TRI-DIRECTIONAL FIBERGLASS POLYESTER
C	SHEET METAL SCREW W/2" WASHER TYP.

TOTAL: $R = R_{19}$



NOTE: BATT FIBERGLASS IS NOT BETWEEN STUDS.

EPS BLOCKOUT DETAIL



THICKNESS:

- 2"
- 2 1/2"
- 3"
- 4"